

Limited Edition Pink  
**DATACARD® SD260™ CARD PRINTER**



*Datacard Group proudly  
supports women in their  
fight against breast cancer.  
Through March 2012, we  
will donate to the Pink  
Ribbon Foundation with  
every purchase of a Limited  
Edition Pink Datacard  
SD260 Card Printer.*

### **The best card issuance value on anyone's desktop**

The Limited Edition Pink Datacard® SD260™ one-sided card printer is packed with industry-leading innovations that make desktop ID card printing simple and economical. The SD260 printer is ideal for small- to medium-sized businesses, schools, hospitals, fitness clubs and anyone who prints ID cards as part of their busy workday. With its competitive features and price, the SD260 printer is a great value.

### **Dozens of great innovations in one great card printer family**

- **Superior speed and productivity.** Print more cards in less time. The SD260 printer is significantly faster than any other desktop card printers in its class. And TruePick™ card handling accurately picks cards, standard and thin, with no adjustments.
- **Superb image quality for high-impact IDs.** New TrueMatch™ printing technology — an industry exclusive — ensures the colors on your screen closely match the colors on your card. Batch after batch, you get consistently crisp, clean printing results from the first card to the last.
- **Easy operation that anyone can master.** Intuitive icons guide you through the soft-touch control panel and LCD screen. Cards and supplies are easy to load, and the ergonomically designed ribbon cartridge includes a drop-in cleaning roller.
- **All the right connections for easy setup.** Standard, built-in Ethernet and USB ports, and the browser-based Printer Manager, help you integrate the SD260 printer into just about any application or IT environment.
- **Engineered for Earth-friendly performance.** The SD260 printer earned its ENERGY STAR® qualification by consuming far less electricity than its predecessors. With unique features such as biodegradable supply cores made with EcoPure® additive, recyclable packaging and power-down button, the SD260 printer sets new benchmarks for environmentally responsible card printing.

**Datacard**Group

# LIMITED EDITION PINK DATACARD® SD260™ CARD PRINTER

- SD260™ printer: One-sided (simplex) card printing
- Color and monochrome printing in same unit
- Reloadable supply cartridges with drop-in cleaning roller
- Automatic 100-card input hopper (with exception card slot)
- Advanced printer driver; support for third-party application development
- Intuitive LCD panel with soft-touch controls
- Standard Ethernet and USB connectivity
- 25-card output hopper standard



## SD260 Printer Standard Features

Print technology	Direct-to-card dye-sublimation/resin thermal transfer
Print capabilities	SD260: One-sided, edge-to-edge printing; manual two-sided printing Full-color and monochrome printing capability Alphanumeric text, logos and digitized signatures; 1D/2D bar code images Printer pooling/sharing (available soon)
Print resolution	300 dots per inch, 256 shades per color panel
Print speed	Full-color printing: up to 200 cards per hour, one-sided (YMCKT*) Monochrome: up to 830 cards per hour, one-sided (black HQ*)
Card capacity	Automatic feed: 100-card input for 0.030 in. (0.76 mm) cards; 25-card output standard Manual feed: 1-card input; 5-card output for 0.030 in. (0.76 mm) cards (SD260)

## SD260 Printer Options

Magnetic stripe encoding	Field upgradeable ISO 7811 three-track option (high- and low-coercivity) JIS Type II single-track option Support for standard and custom data formats
End-user upgradeable options	Kensington® security lock for printer

## SD260 Printer Specifications

Physical dimensions	SD260: L 15.4 in. x W 6.9 in. x H 8.8 in. (39.1 cm x 17.5 cm x 22.4 cm)
Weight	SD260: 8.1 lbs (3.7 kg) (depending on options)
Connectivity	Bidirectional USB 2.0 high speed; Ethernet 10 Base-T/100-Base-TX (with activity light)
Operating system support for printer driver	Windows® 7/Windows Vista® – 32 and 64 bit Windows Server® 2008 – 64 bit Windows XP SP3/Windows Server® 2003 R2– 32 bit Microsoft Windows Hardware Quality Labs (WHQL) certified

\*Ribbon type and number of panels; Y=Yellow, M=Magenta, C=Cyan, K=Black, T=Inline Topcoat, HQ=High Quality

## Build a complete card issuance solution with Datacard Group

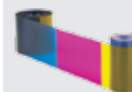
The Datacard SD260™ card printer works with Datacard software, certified supplies and global services to give you a complete ID issuance solution that delivers exceptional results.



### Software

Datacard® ID Works® identification software covers the entire card issuance process,

from design to data capture to card printing and issuance management.



### Supplies

Datacard® Certified Supplies help you produce ID cards

with superb image quality while optimizing the performance of your issuance system.



### Services

Got a question or problem? Datacard Global Services, and our worldwide network

of authorized service providers, are the people to call. They're skilled professionals backed by over 40 years of Datacard Group experience.



## Datacard Group

### Corporate Headquarters

11111 Bren Road West  
Minnetonka, Minnesota 55343-9015  
Phone: +1 952 933 1223  
[www.datacard.com](http://www.datacard.com)  
[info@datacard.com](mailto:info@datacard.com)

Datacard, SD260, ID Works, TrueMatch and TruePick are trademarks, registered trademarks and/or service marks of DataCard Corporation in the United States and/or other countries. Windows, Windows Server and Windows Vista are registered trademarks of Microsoft Corporation. Kensington is a registered trademark of ACCO Brands Corporation. ENERGY STAR is a registered trademark owned by the U.S. Environmental Protection Agency. EcoPure is a registered trademark owned by Bio-Tec Environmental LLC. Names and logos on cards are fictitious. Any similarity to actual names, trademarks or tradenames is coincidental.

©2011 DataCard Corporation. All rights reserved. Specifications subject to change without notice.

DP11-9030